

# **Analysis of the status and recommendations for the development of further activities for people in NEET status**

**Valerija Botrić**

The Institute of Economics, Zagreb

2nd annual Research Capacity Building 4-lateral Meeting

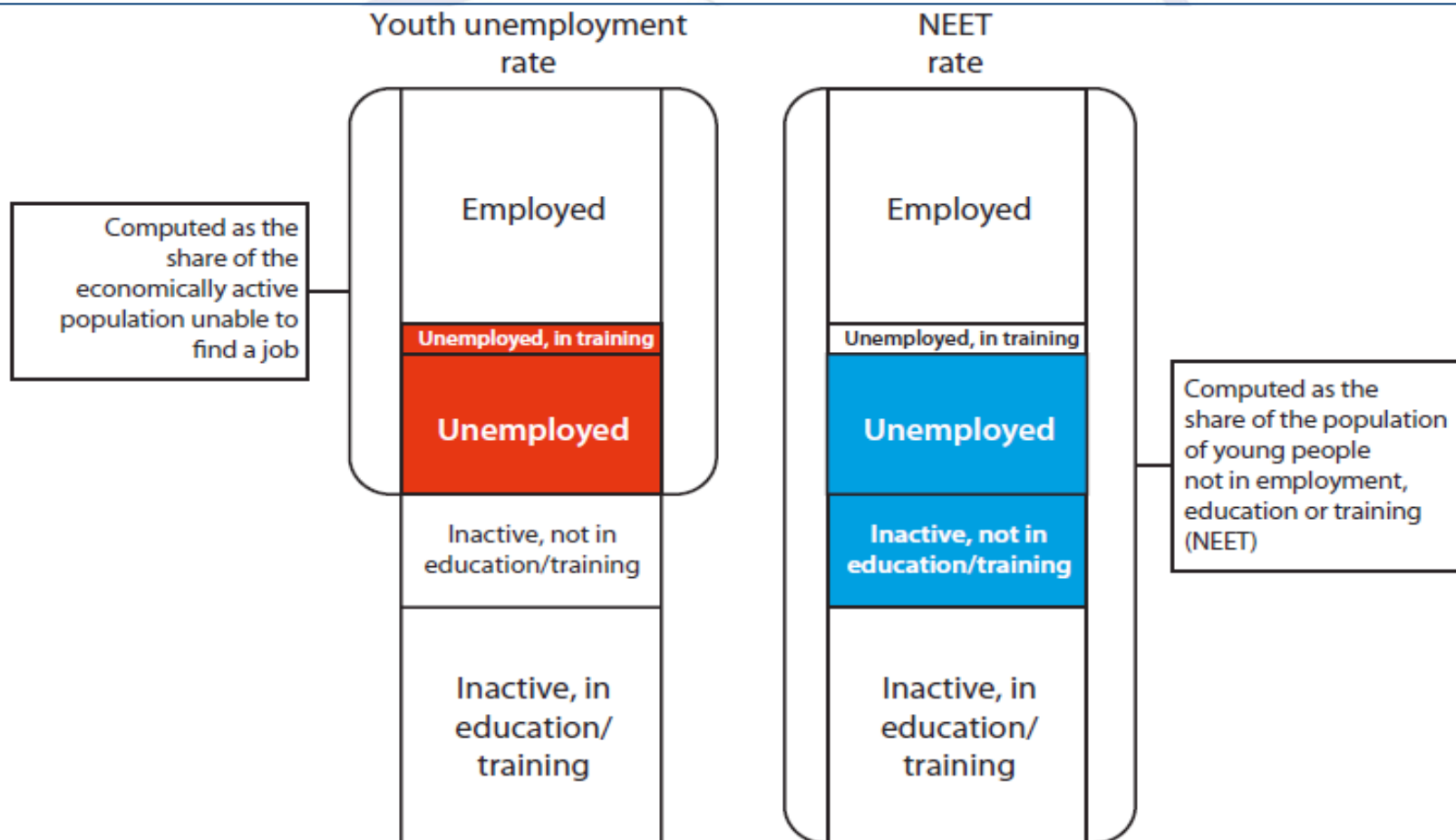
**Belgrade, May 17-18, 2018**

# Brief information about the project

---

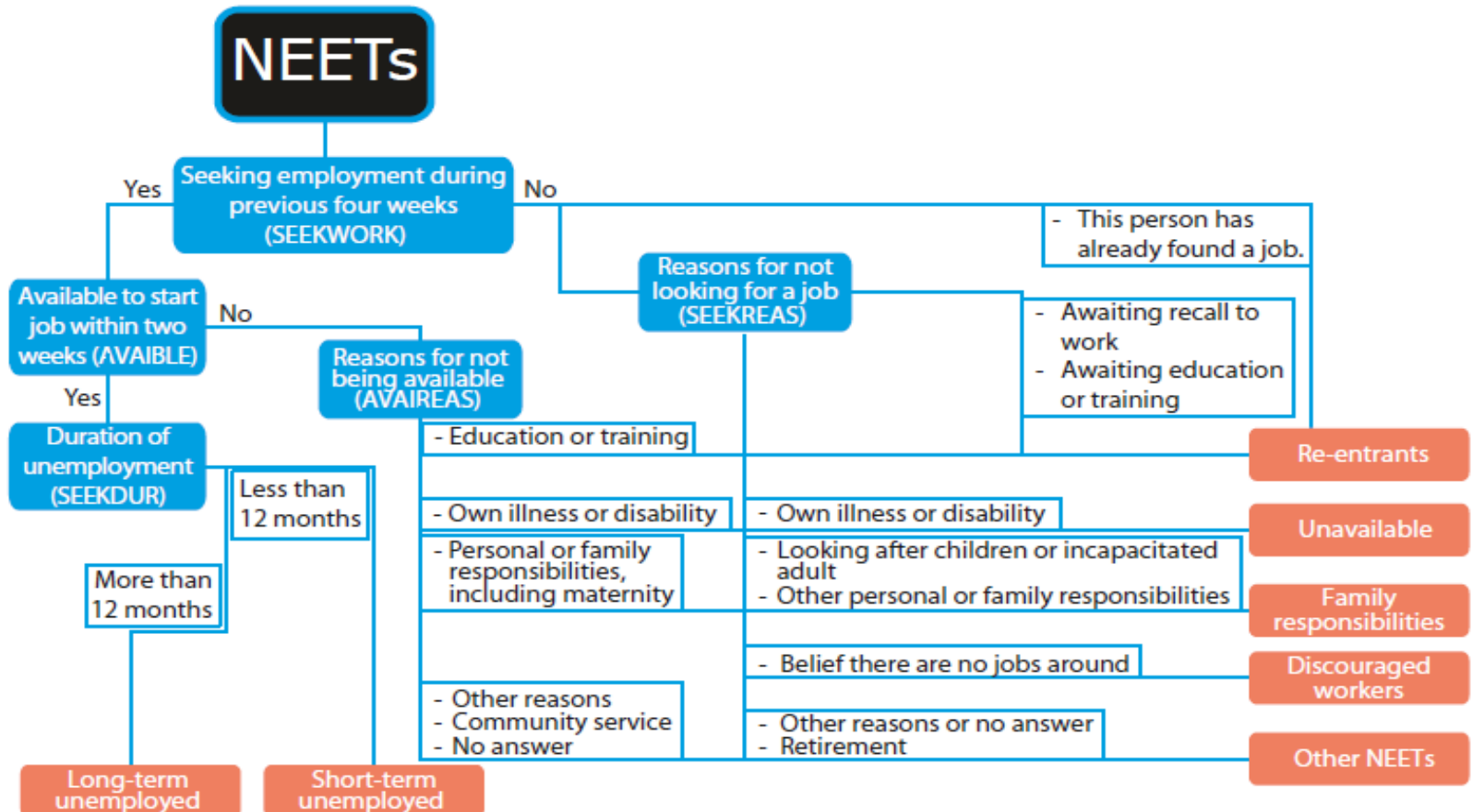
- **Commissioned by:** Ministry of Labor and Pension System
- **Main purpose:** establish a system of detection and monitoring of young people aged between 15 and 29 in NEET status with an aim of their re-engagement in education or on the labor market.
- Ultimate goal: outreach measures for NEET population (design, implementation, monitoring)
- EIZ researchers: Iva Tomić, Valerija Botrić, Ivan Žilić

# Who are the NEET?



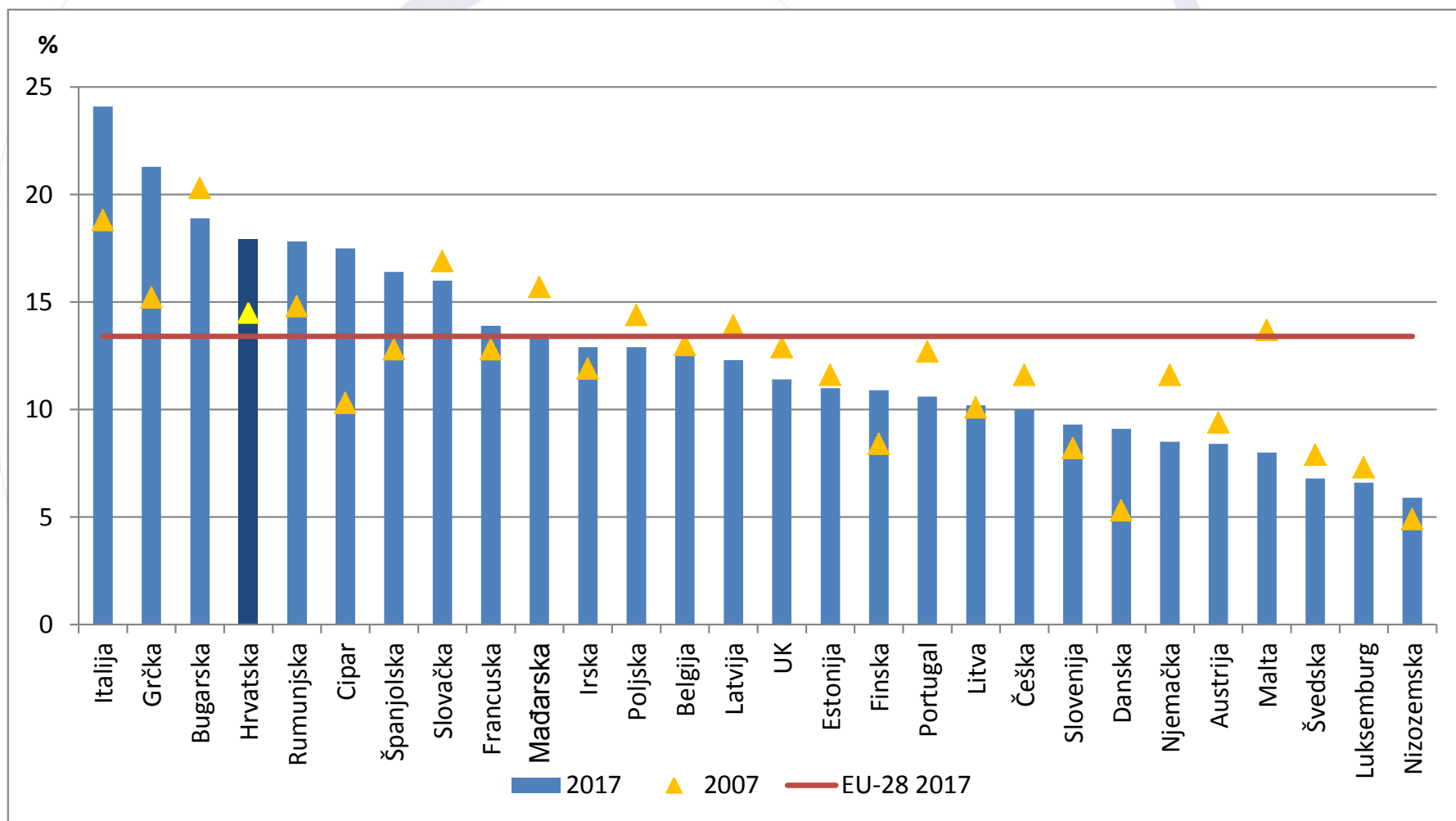
Source: Eurofound 2012.

# NEET according to the LFS

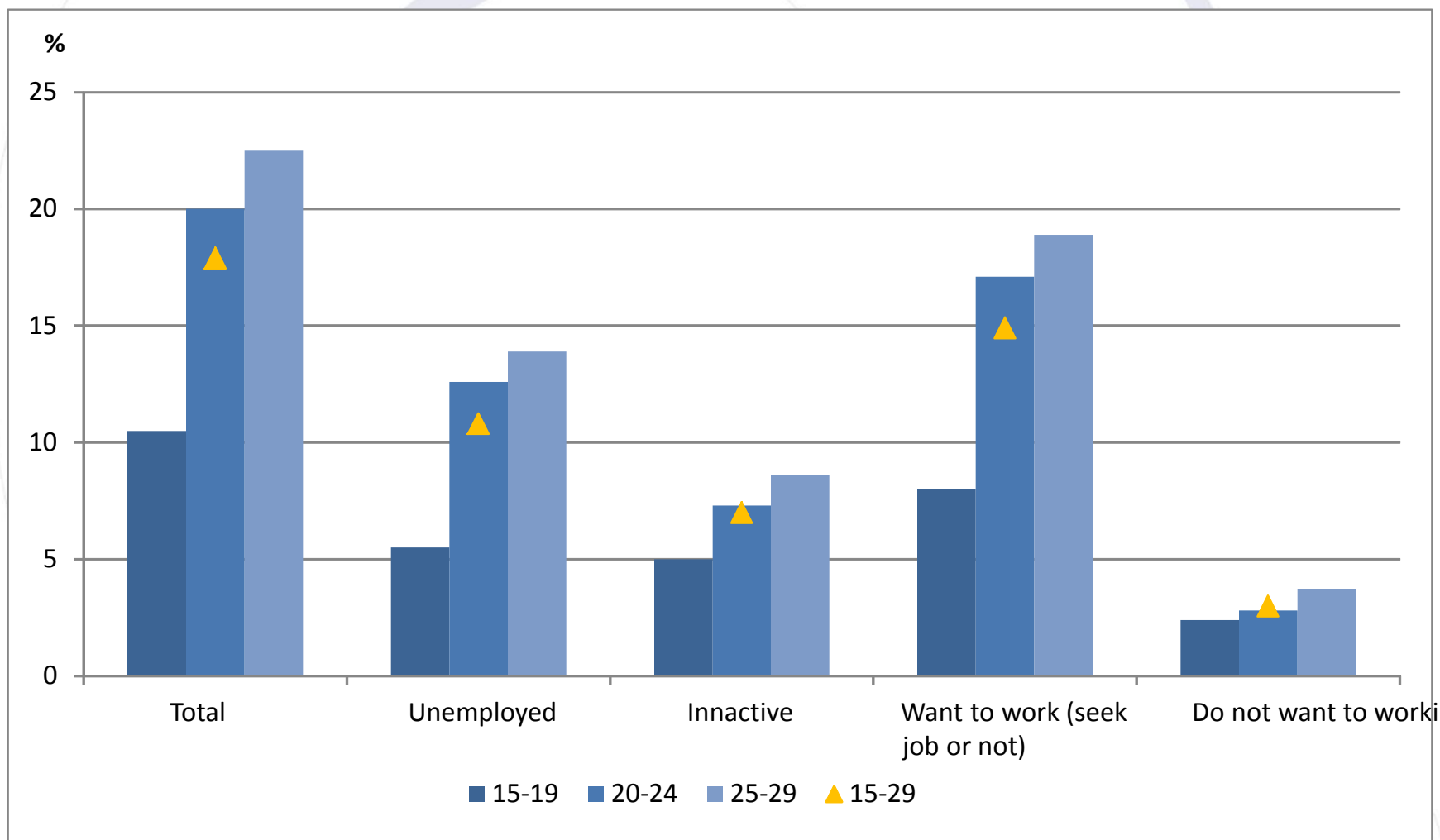


Source: Eurostat, EU Labour Force Survey.

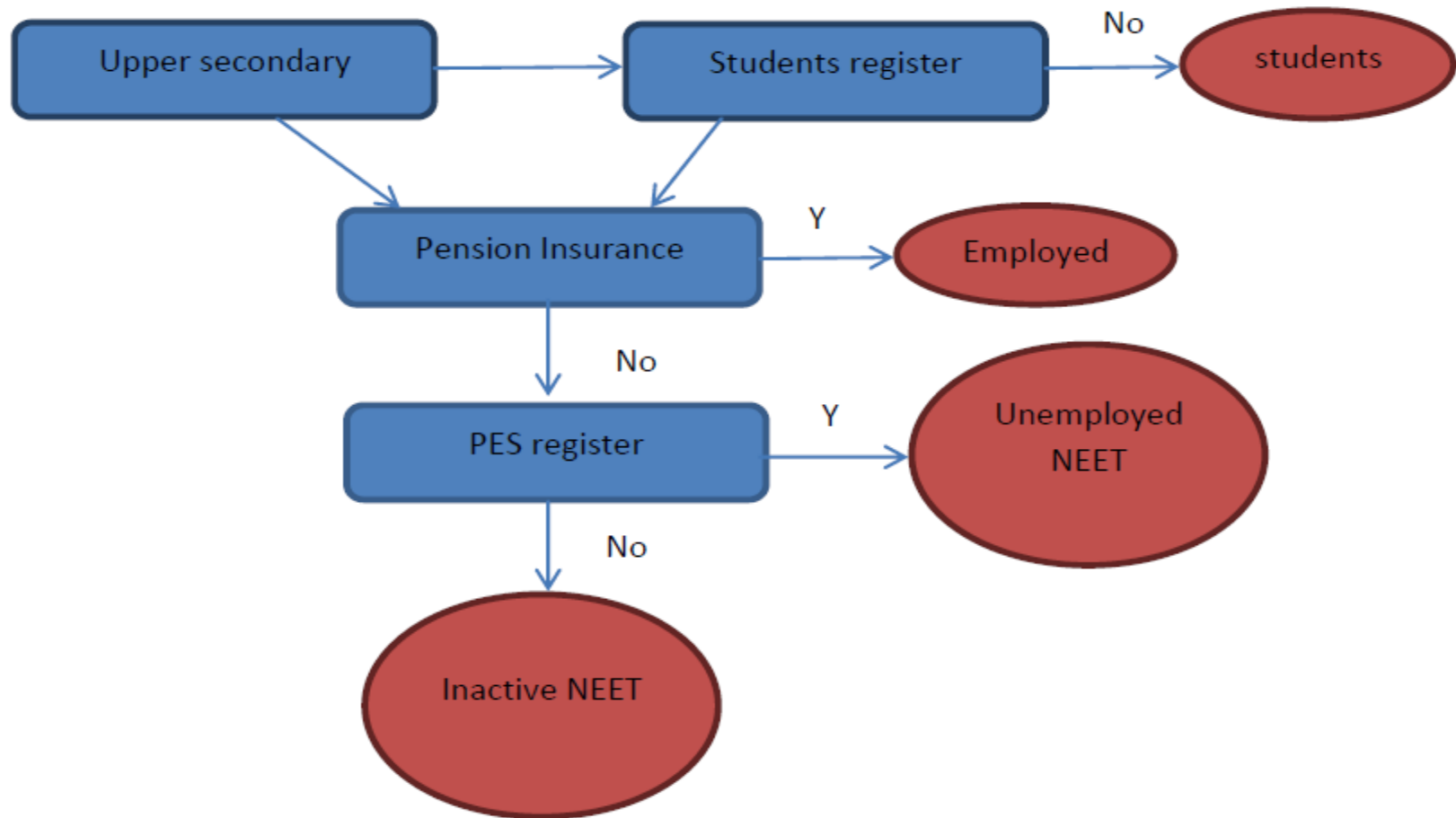
# NEET rate 2007 and 2017



# Characteristics of NEET population (LFS)

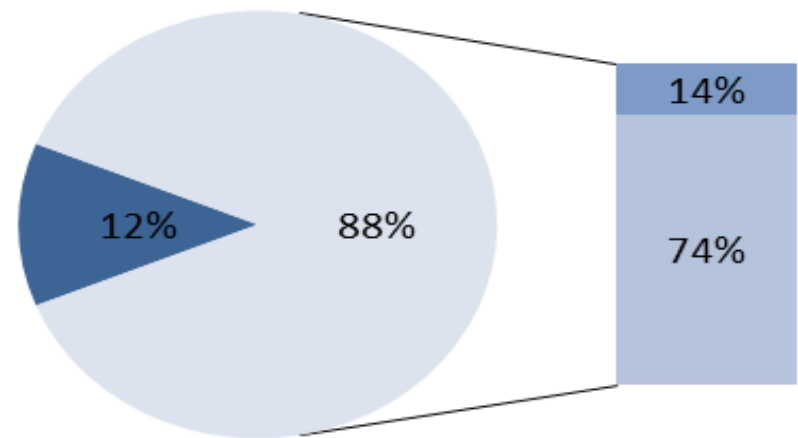
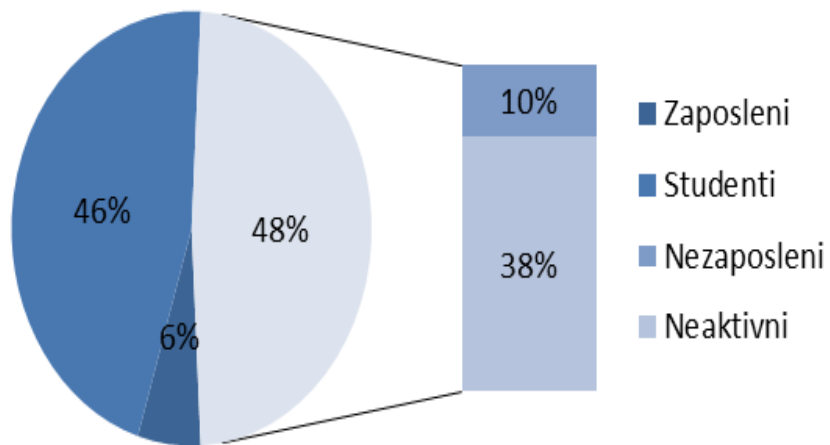


# Project methodology for NEET tracking



## Upper secondary

## Students



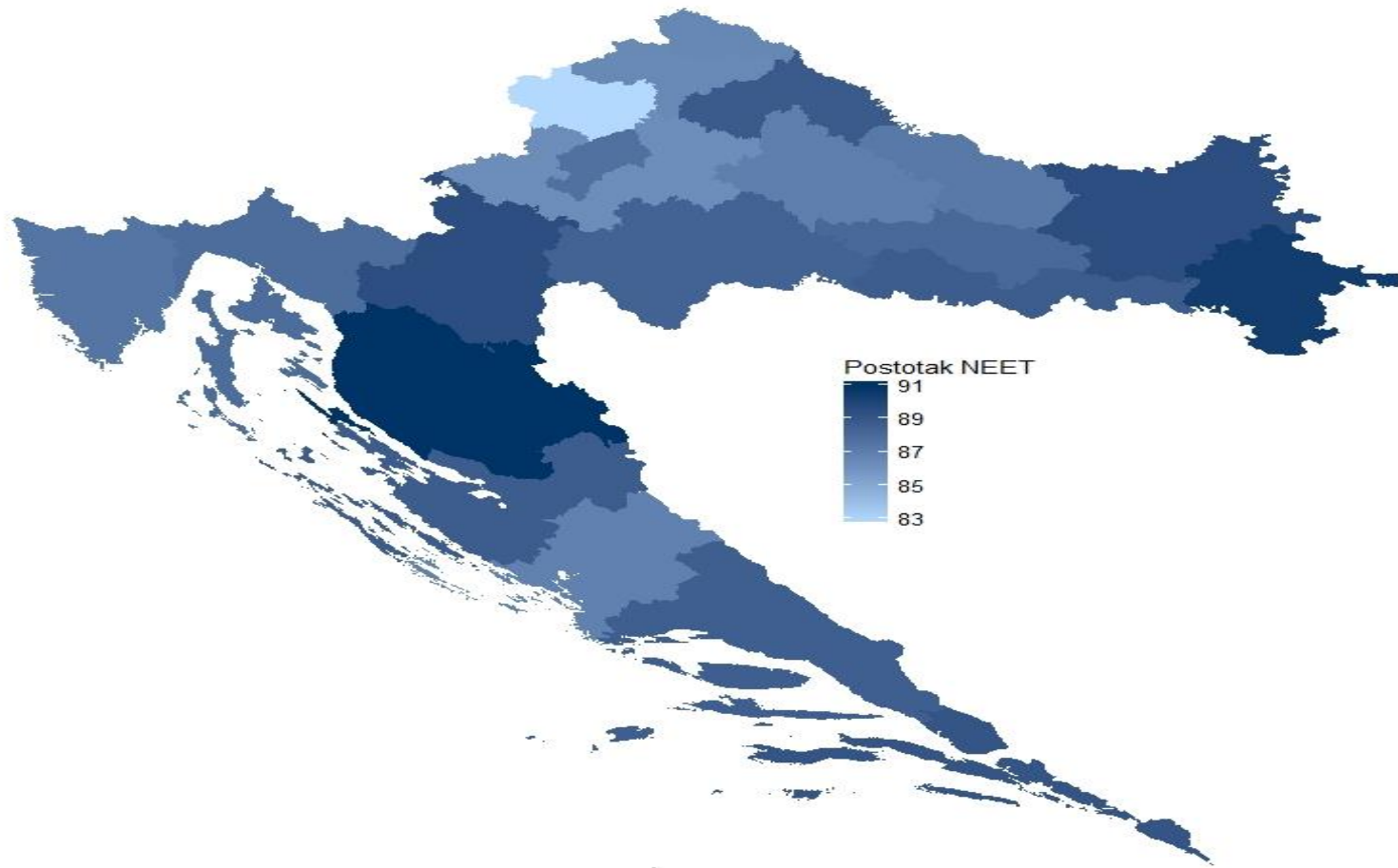


## Some (detailed) results so far

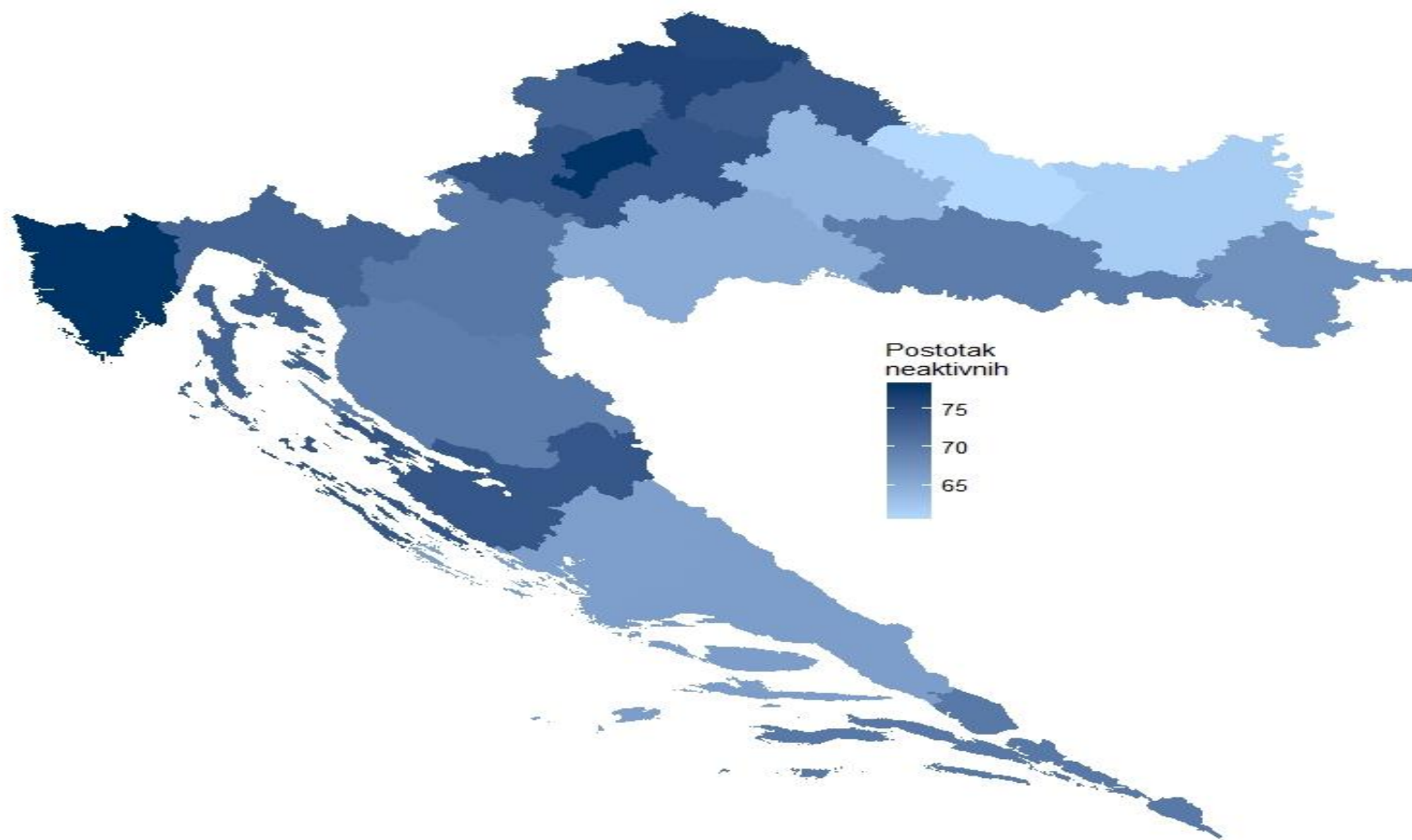
---

- Most results confirm previous findings from the literature, based on alternative data source
- Upper secondary graduates: females more likely to continue education, males more likely to become inactive NEET; those with only elementary education have the highest percentage of inactive NEETs, while those who graduate from gymnasium are more likely to continue education
- Students: gender differences not pronounced, the employment rate is the lowest for art academies
- However, now we can observe findings in more details

# NEETs (15-29) regional distribution



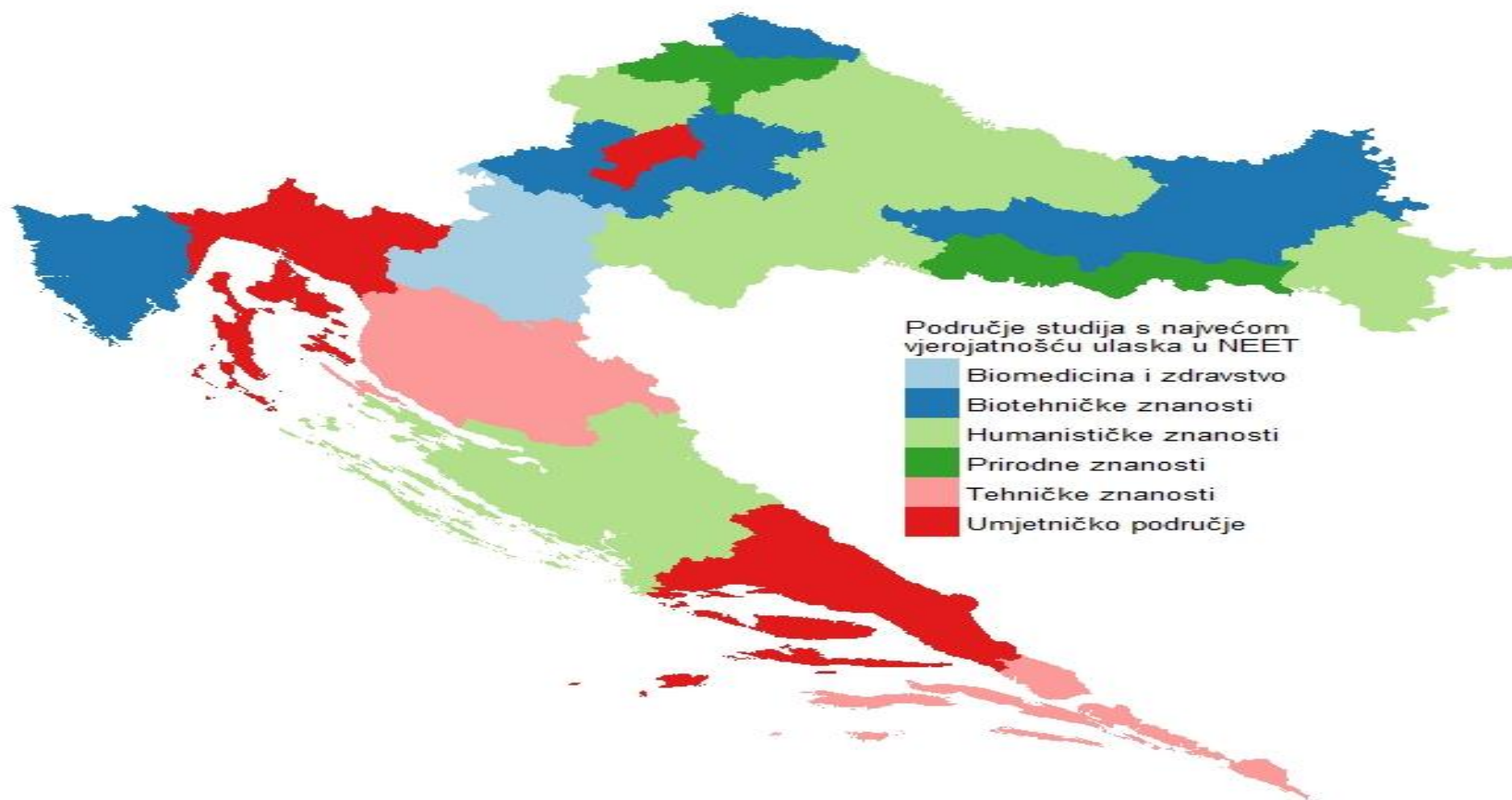
# Inactive NEETs regional distribution



# Upper secondary highest NEET entry - vocation



# Students highest NEET entry – scientific areas



- The administrative databases have potential for analysis of NEET population in Croatia and for future impact policy analysis.
- **Very specific recommendations have been made to different stakeholders how to improve the datasets in order to ensure more effective applications.**
- The system should be further developed to
  - (i) ensure the dataset for evidence based policy making
  - (ii) support development of early interventions mechanism in order to prevent high rate of NEET entry